

*FixO³ workshop
Bremen, April 15-16, 2015*



SeaDataNet

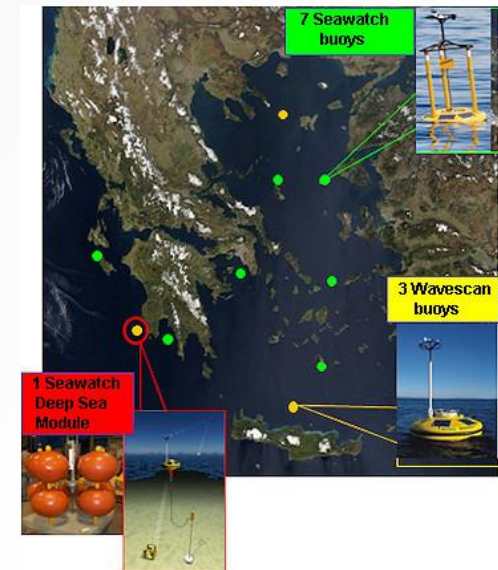
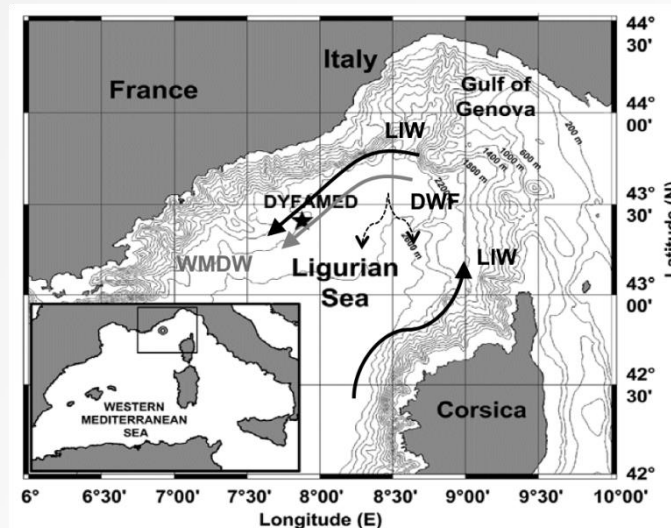
*PAN-EUROPEAN INFRASTRUCTURE
FOR OCEAN & MARINE DATA
MANAGEMENT*

Accessing SeaDataNet data – Hands on

M. Fichaut- SeaDataNet II project Coordinator

Proposed exercises

- Work on the DYFAMED (French) and the POSEIDON (Greek) datasets
 - First look at the description of the observatories
 - Then download some data and upload them in Ocean Data View



Descriptions of the observatories (EDIOS)

- www.seadatanet.org
- → Metadata
- Choose EDIOS (left-hand side menu or Image)
- Search for DYFAMED
 - 1 programme, 2 observatories
 - Have a look to the descriptions
- Search for POSEIDON
 - 1 programme, 8 observatories
 - Have a look to the descriptions

Data discovery and download (CDI)

- www.seadatanet.org
- → Data access
- 2 pathways : Search or Browse
- Choose Search to do the 2 following exercises
 - Look for DYFAMED data or
 - Look for POSEIDON moored surface buoy data
 - Or both if time permits

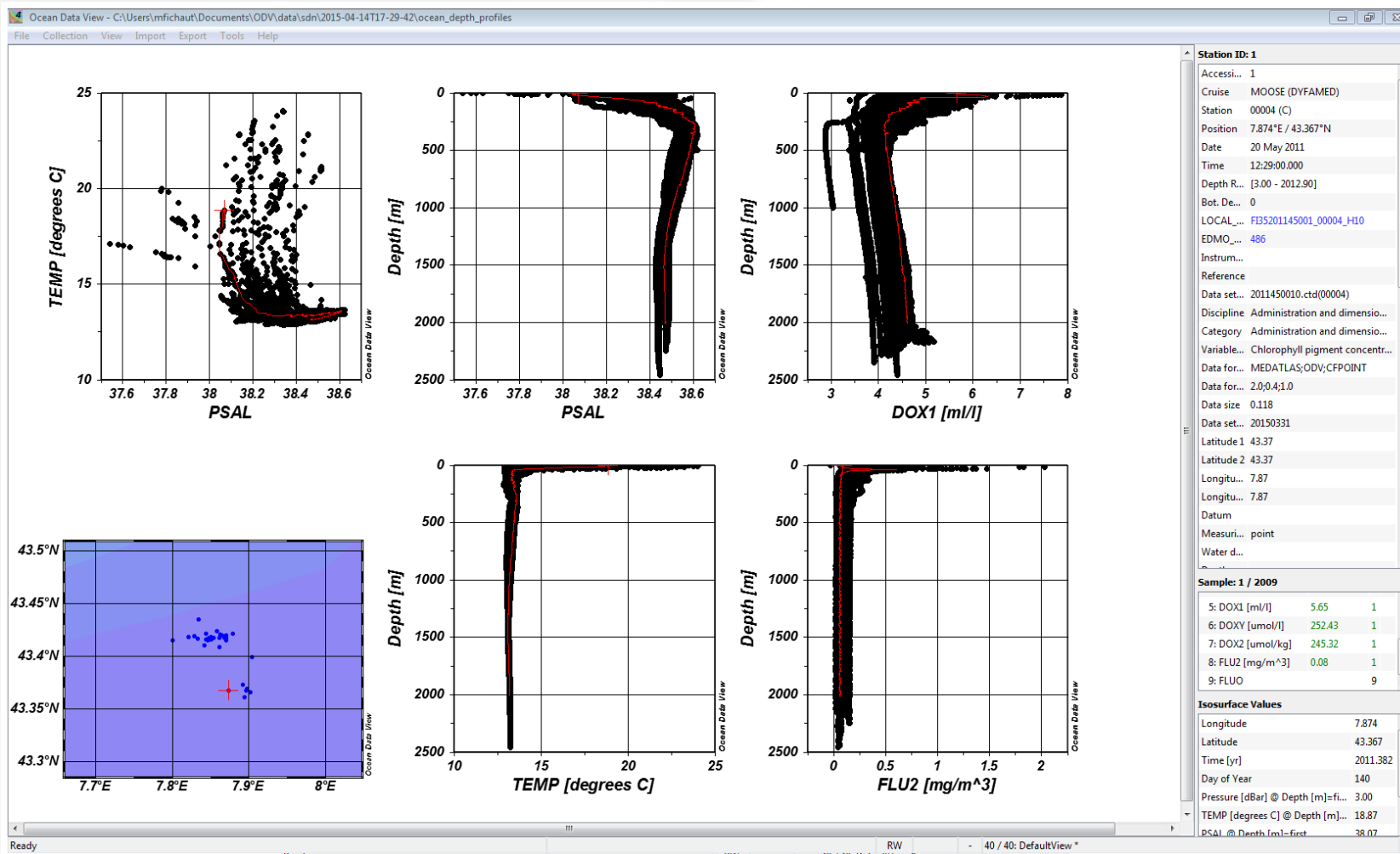
DYFAMED data (1)

- Use the free search field to retrieve the data
- Use the Summary button to see what is available
- Work on the CTD dataset
 - How many data?
 - Who are the originators?
 - How long is the time series?
 - What are the measured parameters?
 - Are the data unrestricted?
- Look at a CDI description
 - 2 ways by clicking on the eye in the show column
 - By clicking on “i” - information button on the left hand side of the map, and then by clicking on the dot of a station
- Download some of the CTDs

DYFAMED data (2)

- Send a request for CTDs downloading
 - What are the available format for data distribution?
 - See how to change the delivery format of 1 file, of all the files
 - Send a request for downloading CTD files at one or several of the format(s) :
note that hands-on session is time limited, so do not download all CTDs.
- Follow your request on the RSM (Request Status Manager)
- Once the data files are available, download them
- Import the SeaDataNet file in ODV (Ocean Data View) software

Some DYFAMED CTDs plots



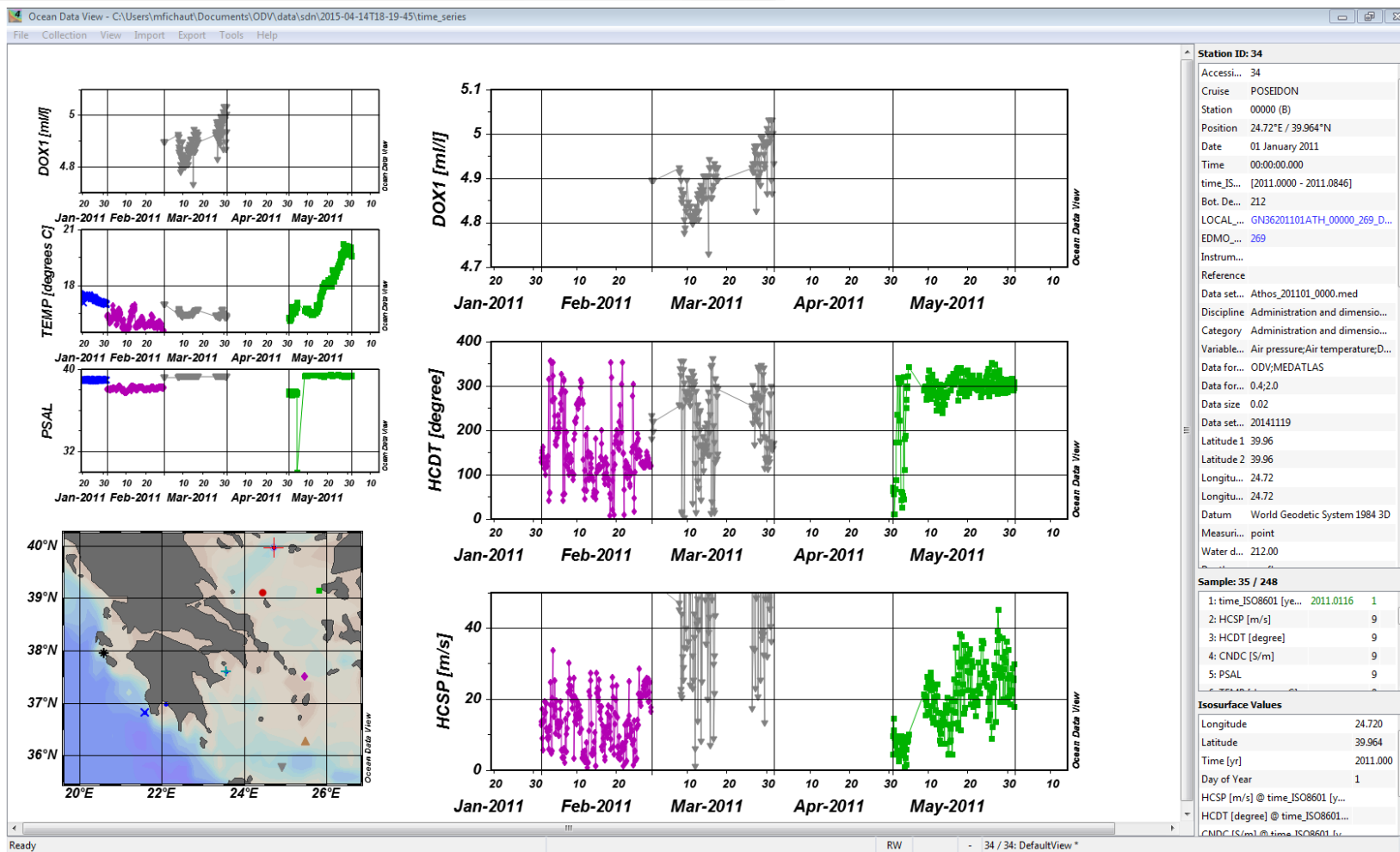
POSEIDON data (1)

- Use the free search field to retrieve the data
 - POSEIDON data are also Spanish data on the ship POSEIDON, and Portuguese sediment cores
 - Refine the query in order to get only the data of the Moored surface buoys (Platform type)
- Use the Summary button to see what is available
- Work on the dataset on one particular year
 - Use the Timeseries on/off button
 - How many data?
 - Who are the originators?
 - What are the measured parameters?
 - Are the data unrestricted?

POSEIDON data (2)

- Look at a CDI description
 - 2 ways by clicking on the eye in the show column
 - By clicking on “i” - information button on the left hand side of the map, and then by clicking on the dot of a station
- Download some of the data
- Send a request for data downloading
 - What are the available format for data distribution?
 - See how to change the delivery format of 1 file, of all the files
 - Send a request for downloading files at one or several of the format(s) : *note that hands-on session is time limited, so do not download all CTDs.*
- Follow your request on the RSM (Request Status Manager)
- Once the data files are available, download them
- Import the SeaDataNet zip file in ODV (Ocean Data View) software

Poseidon data – year 2011



Useful links

- [Description of SeaDataNet data transport formats](#)
- [SeaDataNet vocabularies](#)
- [SeaDataNet newsletters](#)
- [How to contribute to SeaDataNet?](#)
- [SeaDataNet software](#)

- Helpdesk : sdn-userdesk@seadatanet.org