

*FixO<sup>3</sup> workshop  
Bremen, April 15-16, 2015*



**SeaDataNet**

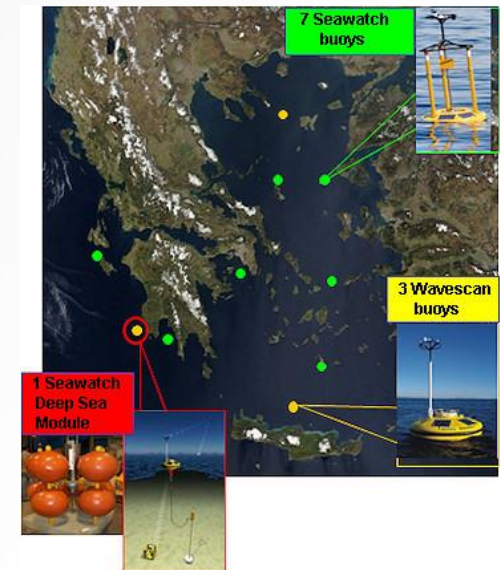
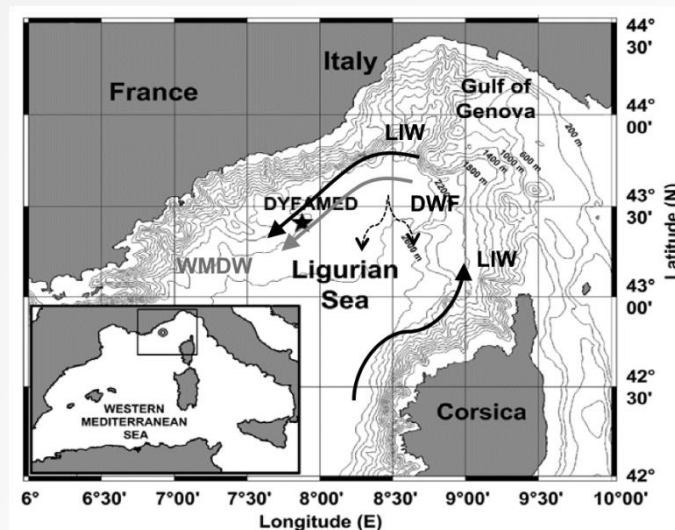
PAN-EUROPEAN INFRASTRUCTURE  
FOR OCEAN & MARINE DATA  
MANAGEMENT

## ***Accessing SeaDataNet data – Hands on***

M. Fichaut- SeaDataNet II project Coordinator

## Proposed exercises

- Work on the DYFAMED (French) and the POSEIDON (Greek) datasets
  - First look at the description of the observatories
  - Then download some data and upload them in Ocean Data View



## ***Descriptions of the observatories (EDIOS)***

- [www.seadatanet.org](http://www.seadatanet.org)
- ➔ Metadata
- Choose EDIOS (left-hand side menu or Image)
- Search for DYFAMED
  - 1 programme, 2 observatories
  - Have a look to the descriptions
- Search for POSEIDON
  - 1 programme, 8 observatories
  - Have a look to the descriptions

## *Data discovery and download (CDI)*

- [www.seadatanet.org](http://www.seadatanet.org)
- ➔ Data access
- 2 pathways : Search or Browse
- Choose Search to do the 2 following exercises
  - Look for DYFAMED data or
  - Look for POSEIDON moored surface buoy data
  - Or both if time permits

## ***DYFAMED data (1)***

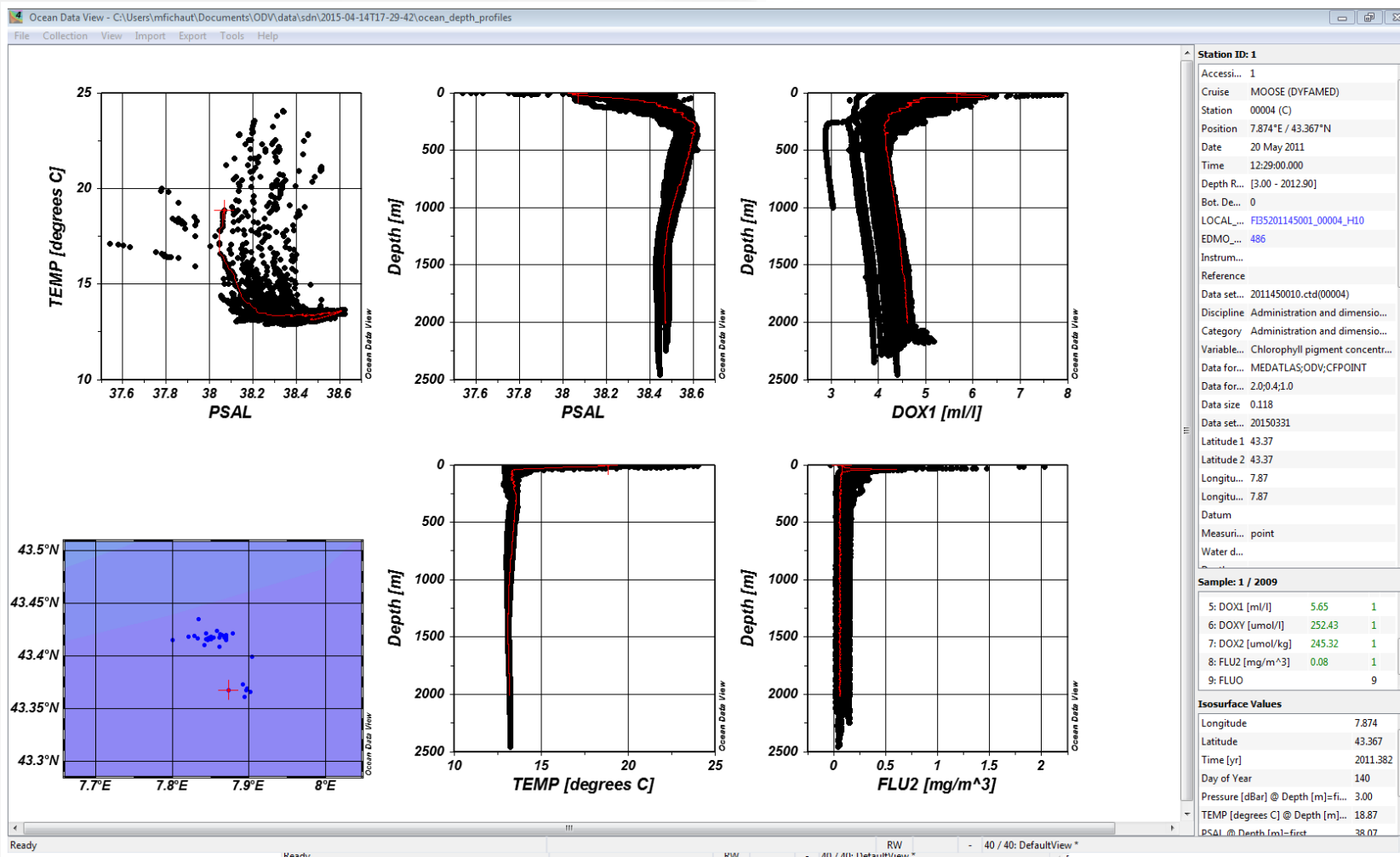
- Use the free search field to retrieve the data
- Use the Summary button to see what is available
- Work on the CTD dataset
  - How many data?
  - Who are the originators?
  - How long is the time series?
  - What are the measured parameters?
  - Are the data unrestricted?
- Look at a CDI description
  - 2 ways by clicking on the eye in the show column
  - By clicking on “i” - information button on the left hand side of the map, and then by clicking on the dot of a station
- Download some of the CTDs



## ***DYFAMED data (2)***

- Send a request for CTDs downloading
  - What are the available format for data distribution?
  - See how to change the delivery format of 1 file, of all the files
  - Send a request for downloading CTD files at one or several of the format(s) :  
*note that hands-on session is time limited, so do not download all CTDs.*
- Follow your request on the RSM (Request Status Manager)
- Once the data files are available, download them
- Import the SeaDataNet file in ODV (Ocean Data View) software

# Some DYFAMED CTDs plots



## ***POSEIDON data (1)***

- Use the free search field to retrieve the data
  - POSEIDON data are also Spanish data on the ship POSEIDON, and Portuguese sediment cores
  - Refine the query in order to get only the data of the Moored surface buoys (Platform type)
- Use the Summary button to see what is available
- Work on the dataset on one particular year
  - Use the Timeseries on/off button
  - How many data?
  - Who are the originators?
  - What are the measured parameters?
  - Are the data unrestricted?



## POSEIDON data (2)

- Look at a CDI description
  - 2 ways by clicking on the eye in the show column
  - By clicking on “i” - information button on the left hand side of the map, and then by clicking on the dot of a station
- Download some of the data
- Send a request for data downloading
  - What are the available format for data distribution?
  - See how to change the delivery format of 1 file, of all the files
  - Send a request for downloading files at one or several of the format(s) : *note that hands-on session is time limited, so do not download all CTDs.*
- Follow your request on the RSM (Request Status Manager)
- Once the data files are available, download them
- Import the SeaDataNet zip file in ODV (Ocean Data View) software



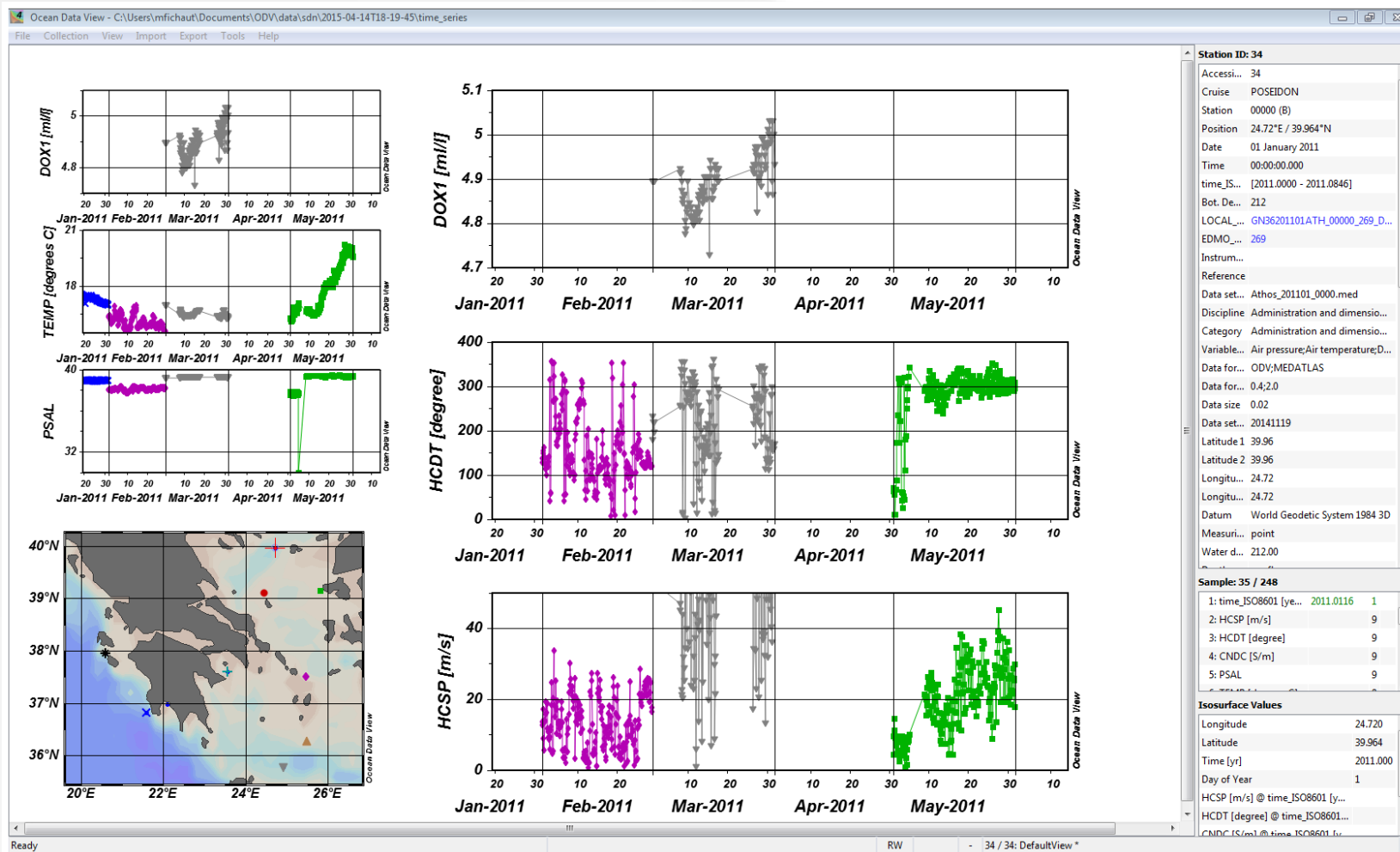
SeaDataNet

PAN-EUROPEAN INFRASTRUCTURE  
FOR OCEAN & MARINE DATA  
MANAGEMENT

10/11

FixO<sup>3</sup> workshop, Bremen, April 15-16, 2015

# Poseidon data – year 2011



## *Useful links*

- Description of SeaDataNet [data transport formats](#)
- [SeaDataNet vocabularies](#)
- [SeaDataNet newsletters](#)
- [How to contribute to SeaDataNet?](#)
- [SeaDataNet software](#)
- Helpdesk : [sdn-userdesk@seadatanet.org](mailto:sdn-userdesk@seadatanet.org)